

## Mandatory testing and inspections of equipment? Get our safety checks.

XERVON Wind is part of the REMONDIS Group, one of the world's largest service providers for recycling, service and water. The group of companies has branches and associated businesses in more than 30 countries across Europe, Asia and Australia. With over 40,000 employees, the group serves millions of citizens as well as many thousands of companies. The highest level of quality. Working for the future.

XERVON Wind GmbH  
Bernhardstr. 29  
49809 Lingen // Germany  
T +49 591 610037-0  
wind-xn@xervon.com  
xervon-wind.com

A company of the  
REMONDIS Group



### > XERVON Wind GmbH

Our preventive service and repair concepts are designed to ensure the long life and reliable operation of your systems

[xervon-wind.com](https://www.xervon-wind.com)

## We keep a very close eye on the safety of your system

With XERVON Wind, you have the ultimate expert for wind turbines at your side. We ensure that any equipment requiring inspection always meets the necessary standards and safety requirements, thus guaranteeing the efficient operation of your system.

### We check the functionality, integrity and expiry dates for:

- Ladders
- Cranes
- Climbing harnesses
- Access systems
- Fire extinguishers
- Rescue equipment
- Chain hoists
- Medical kits

### Your benefits

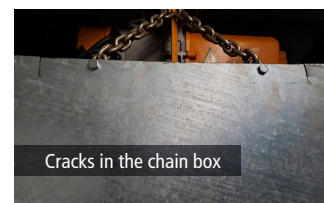
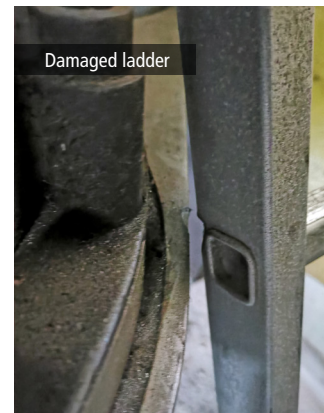
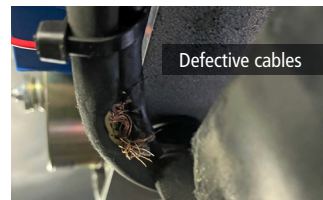
- Save costs by avoiding downtime
- Individual test concept tailored to your wind turbine
- Legal certainty thanks to our comprehensive documentation
- Cooperation with all authorised inspection bodies
- Tests and repairs of all components from a single source
- Automatic reminder for repeat testing and inspections



Safe inspections in accordance with DGUV (German Social Accident Insurance), TRBS (Technical Rules for Workplace Safety), ArbSchG (Industrial Safety Act)



Skilled personnel through manufacturer training



### Our on- and offshore services

- Testing of the technical safety equipment of your wind turbine
- Testing in accordance with the manufacturer's specifications (ladders, climbing protection, access system, crane system, PPE)
- Overload and braking test with real weights of 250–750 kg
- Testing of attachment points in the wind turbine
- Inspection of the access system by an authorized central inspection body (Dekra, TÜV, GTÜ) at annual intervals
- Deployment of our own experienced specialist staff, who receive constant further training
- Functionally equipped vehicle fleet for all areas of application